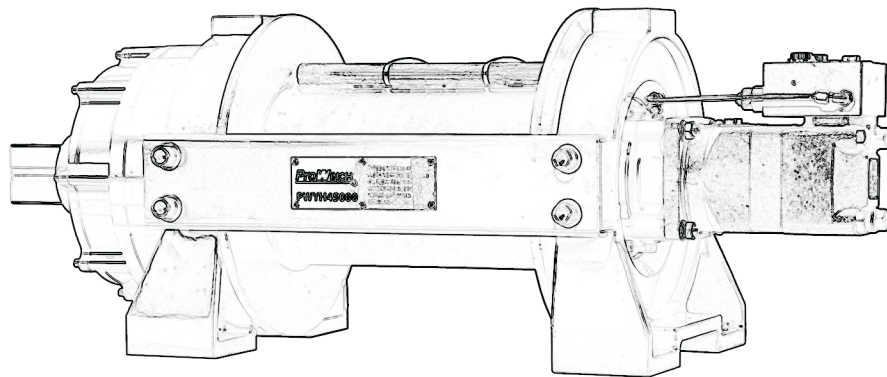




PWY Hydraulic Winches

User's Manual / Manual de usuario
Safety Warnings / Advertencias de Seguridad



This page intentionally left blank

PROPERTY REGISTRY N° 189487
ANY REPRODUCTION IS FORBIDDEN
PROPERTY OF PROWINCH® 2018 - V8.0 ALL RIGHTS RESERVED
PROWINCH LLC COMPANY WITH QUALITY MANAGEMENT SYSTEM

PROWINCH® DISCLAIMER

Prowinch® LLC declares that it has made available to the Customer each and every one of the security warnings related to the purchased product and that, as a result, it does not assume any responsibility for any damages or losses that may be suffered by the client or third parties, cause or as a direct or indirect consequence of the breach or omission of any of the instructions or safety warnings contained in the User Manual and Security Warnings corresponding to the unit purchased.

In this sense, Prowinch® LLC will not be liable for accidents and / or damages to persons and / or property resulting from the negligent use of the product. In no case does Prowinch® LLC assume any liability arising from the use of these voluntary recommendations, and does not offer any guarantee in relation to them. These recommendations do not take precedence over the current safety regulations of the plant. For purposes of enforcing the Warranty of the product purchased, Prowinch® LLC, will only be liable for any damage when it is possible to prove that the user has followed each and every one of the warnings contained in the User Manual and Safety Warnings.

1. It is the sole responsibility of the Client / User to verify that the acquired equipment, products and accessories comply with the characteristics, capacities, requirements, components, accessories and other conditions for the use that the Client / user intends to give it.

2. It is also the sole responsibility of the Client / User to ensure that the equipment and products purchased are operated and maintained with adequate safety standards and by personnel duly trained in the use thereof. The Client / User is also responsible for implementing all the security measures necessary to prevent accidents or damages to people or property and for following the indications and warnings of the corresponding manual.

3. Any assistance provided by Prowinch® LLC in the selection of the equipment, the capacities and characteristics required by the clients is delivered free of charge and based on the information about the application, use and requirements indicated by the Client itself. It does not correspond to Prowinch® LLC to verify the accuracy of the given information. It is the sole and exclusive responsibility of the Client -or who will use the equipment and products acquired- to ensure that the specifications comply with the capabilities, characteristics, up-to-date maintenance and everything necessary for a correct and safe operation in relation to the intended use.

4. Prowinch® LLC recommends the use of winches with 4 brakes for personnel lifting. The use of winches of 3 brakes or less or safety features lower than the best available for personnel lifting, is the sole responsibility of the customer in order to guarantee the safety of the personnel and users of the equipment it is necessary to carry out the inspections

and maintenance of the equipment according to the recommended frequency in relation to its work cycle. It is mandatory to keep record and evidence the written and photographic reports of: Maintenance, Start-up, Load Tests, Training, Certifications, Inspections and Reports of failures and accidents.

5. The aforementioned reports must be sent by email to registros@prowinch.com within the first 7 calendar days after the occurrence of an event.

6. Compliance with the timely implementation of the mandatory activities described in points 6 and 7 in addition to all the activities mentioned in the corresponding rules applied are the sole responsibility of the user. Failure to comply with the foregoing conditions releases Prowinch® LLC from any type of Liability and Warranty to the team, customer, staff or user, or any other liability that could be attributed to Prowinch® LLC.

7. The information contained in this manual may contain technical errors or inaccuracies. Prowinch® LLC is not responsible for typing errors, omission or incorrect information.

8. This manual is subject to change without prior notice. Download the latest version available at www.prowinch.com.

9. Always check www.prowinch.com for the latest information regarding this product.

3. GENERAL INFORMATION

The winch's standard equipments contain gear reducer, drum, hydraulic motor, the winch obtains its pressure from the vehicle's existing power steering pump or other hydraulic power.

There are several ways to supply the pressure for winch. The first way: use an individual pump for engineering use; the second way: the winch's pressure is from the vehicle's exiting power steering pump as installation illustration:

1. Use a suitable individual pump which has not oil valve. It supplies pressure for both steering box and winch.
2. Use a combined pump which integrate an oil valve together. The oil valve supplies two kinds of flow for difference demand, one with constant flow is for steering use, the other with higher power is for engineering use. Refer to installation. You can choice the best suitable way. If your winch installed as a simple working mode (standard supplied), NEVER POWER WINCH CABLE OUT WITH HEAVY LOAD, that will be serious dangerous.

3.1 Trouble Shooting

SYMPTOM	POSSIBLE CAUSESUGGE	STED ACTION
Winch drum runs slowly or without	Hydraulic system failure. Hydraulic motor failure	Check if oil circuit error. Check system pressure.
Oil leakage	Winch overload.	Change hydraulic motor seals or change hydraulic motor. DO NOT overload during operation.
Winch stuck during Freespooling or hard to Freespool	Knob on the wire rope winch mounting bolts loose. Freespool knob rust.	Smooth wire rope. Tighten the mounting bolts. Disassemble Freespool knob in no load, lubricate it with lubrication oil.
Brake failure	Brake pad worn. Wrong wire rope winding direction.	Change brake assembly. See from motor side, counterclockwise winding should be cable in.



WARNING

Before installing, removing, inspecting, or performing any maintenance on the hoist, the main switch must be de-energized, locked out, and tagged out.
Do not use this equipment in hazardous locations.

3.2 Maintenance

It is highly recommended and that the winch be used regularly (once a month). Simply power the cable out 15m, free spool 5m and then power back in. This will keep all components in good working condition so that the winch can be relied on when needed. Contact your authorized outlet for technical assistance and repairs.

3.3 Lubrication

1. All moving parts within the winch having been lubricated using #2 lithium grease at the factory. No internal lubrication is required.
2. Lubricate cable assembly periodically using light penetrating oil.

3.4 Cable Assembly Replacement

1. Turning clutch to the "Clutch Out" position.
2. Extend cable assembly to its full length. Pay attention to how the existing cable is connected to the drum.
3. Remove old cable assembly and attach new one.
4. Retract cable assembly onto drum, first five wraps being careful not to allow kinking then winch cable must be wound onto the drum under a load of at least 10% rate line pull.
5. The roller fairlead is to be mounted so as to guide the rope onto the drum evenly.

SPECIFICATIONS

3. Unpacking

When unpacking, check to make sure all parts is included. Refer to Winch Assembly Drawing and Parts List (both with respective item numbers) at the end of this manual.

3.1. Installation

Mount winch to the vehicle by using high strength cap screw. It should be aligned and secured to a solid part of the vehicle (front or rear) where the full rated load will be evenly distributed.

3.2 Mounting the directional solenoid valve assembly(Optional)

The valve should be mounted away from any areas where heat may be considered too extreme. Such as an exhaust manifold or turbo. Be sure all plumbing and wiring reaches from the area is selected without being stressed. It may be mounted by using the bracket and Allen screws supplied. Using the bracket as a guide, mark the location of where the mounting holes are going to be drilled, remove the plate and drill four 1/4" holes. Mount valve assembly using nuts, bolts.

Note: No need to mount directional solenoid valve if there is one manual directional valve on the vehicle already.

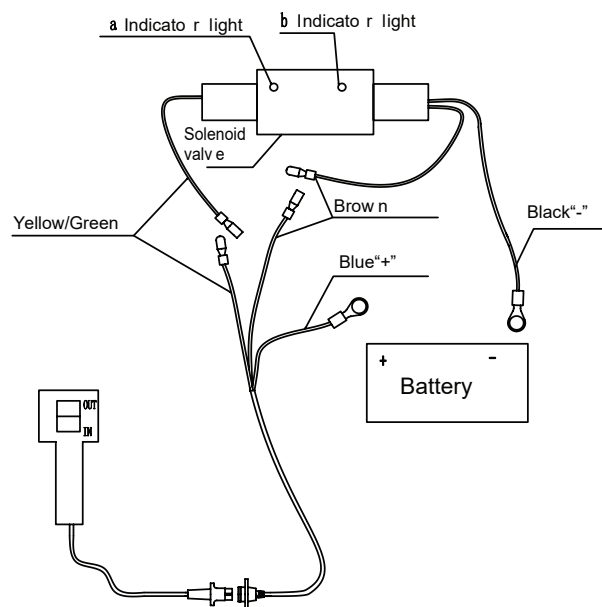
3.3 Electrical connections(Optional)

If winch's power supply is from the vehicle's exiting power steering pump, the solenoid valve system is designed default to the power steering box so power steering is always available even when the winch is in use.

The power source to the solenoid is not energized until the three-pole quick connector plug is plugged in. Each solenoid has two wires--either of which can be used as a ground or for electric power. The grounds are connected to each other at the factory.

The other will connect to the blue and yellow wire in the harness (see illustration). Determine a location on the front grill to mount the female 3 pole plug connector. Drill a hole and mount the female 3 pole plug connector using nuts, bolts and washers supplied. Connect all wiring as shown in illustration.

Test hand control unit, solenoids will make a slight "click" sound if connected properly. Note: No need to do the wiring if there is one manual directional valve on the vehicle already.



3.4 Plumbing connections

Keep all hoses away from any areas where heat may be considered too extreme such as an exhaust manifold or turbo. Lines should not be allowed to rub on any abrasive or vibrating surfaces. In some applications, right angle fittings on the directional valve and motor or balance valve are necessary to make hose mounting more flexible. After plumbing has been laid out on vehicle, install o-ring fittings supplied to valve. Torque tight. **DO NOT OVERTIGHTEN ANY FITTINGS.** Install o-ring fittings on winch motor. Torque tight. Connect any hose port A on motor or port C1 on balance valve to port A on directional valve, port B on motor or port C2 on balance valve to port B on directional valve, port P on directional valve to pump's high pressure port, port T on valve to reservoir. Attach any o-ring or seal from vehicles original tube fitting to tube fitting.

3.5 Cautions

Battery cables should not be drawn taut leave slack for some cable movement. If your application is supplied with an added cooler, please check and follow the steps.

1. Check fluid level.
2. Replace lost fluid to system.(System will need to be purged).
3. Start engine. (Power winch cable in 5 feet).
4. Shut engine off.
5. Check fluid level. (Add fluid until full, start engine, power winch cable, Out 5 feet, Shut engine off and Check fluid level.) Add fluid until full if necessary.
6. Start engine. Power winch cable into desired position. Turn vehicle wheels from lock to lock position 5 times. This will aid in bleeding out any air that may have got into the system.



WARNING

Make sure the clutch is totally engaged before starting any winch operation.
Stay clear and away from raised loads.
Stay clear of cable while pulling do not try to guide cable.
A min. of wraps of cable around the drum.

Thank you for purchasing a Prowinch® winch. This manual describes the operation and maintenance of the winch. All information in this publication is based on the newest production information is available at print time.

1. SAFETY PRECAUTIONS

Prowinch®'s winches are designed for delivering a safe and trustable service if they are operated according to this manual.

This manual contains important information to help you properly install, operate and maintain your winch for maximum performance, economy and safety. Please study its contents thoroughly before putting your winch into operation. By practicing correct operating procedures and by carrying out the recommended preventive maintenance suggestions, you will experience long, dependable and safe service.

After you have completely familiarized yourself with the contents of this manual, we recommend that you carefully file it for future reference.

Applications for PWTR Prowinch® winches

Choose the Prowinch® winch that is right for you: PWTR series offers you top of the line models from 9500 lb up to 17000 lbs, featuring standard and optional accessories for recovery applications. We offer you lightweight, durable and affordable winches. Specially design for recovery applications, our winches are equipped of a durable wound motor for long life and extra pulling power, featuring a tough 3 stage planetary gear box delivering power and reliability. The body and frame of your winch are corrosion resistant stainless steel to provide a long life.

Mandatory use of:



Hard Hat



Safety Glasses



Safety Gloves



Safety Shoes

1.1. Safety Precautions



WARNING:

This symbol indicates unsafe practices or situations which may cause damage to the property and even injuries to the personnel.



DANGER:

This symbol indicates a potentially dangerous situation which if not avoided may cause severe injuries or death



DANGER

All operators and other users who are near the steel chain or its load must wear required safety equipment: gloves, safety helmet / hard hat, safety shoes and eye protection.



WARNING

Before installing, removing, inspecting, or performing any maintenance on the winche, the unit must be unplugged, locked out, and tagged out. Do not use this equipment in hazardous locations.

	<p>WARNING</p> <p>Moving parts can crush and cut.</p> <p>Disconnect power before opening.</p> <p style="font-size: small;">PWWA009 V1.0 ProWinch</p>
--	--

	<p>WARNING</p> <p>Underwind feed only</p> <p>Operating your winch in the overwound orientation could void any warranty and present a very dangerous situation.</p> <p style="font-size: small;">PWWA009 V1.0 ProWinch</p>
--	---

	<p>WARNING</p> <p>Verify torque of Screws periodically Tighten base screws To 120 lb Use always red Threadlocker</p> <p style="font-size: small;">ProWinch</p>
--	---

Read and understand the contents of this User Manual thoroughly before handling the product. Practicing correct and safe operating procedures and carrying out the recommended preventative maintenance will ensure a long, reliable, and safe service.

After carefully reading and understanding the User Manual, store it for future reference.

2. GENERAL SAFETY PRECAUTIONS

1. Take time to fully read the instructions from this User's Manual, in order to understand your winch and its operations.
2. Do not exceed winch or winch wire rope rated capacity. Double line using a snatch block to reduce winch load.
3. Do not use winch or winch wire rope for towing. Shockloads can damage, overload and break wire rope.
4. Do not use a winch to secure a load.
5. Do not operate this winch when under the influence of drugs, alcohol or medication.
6. Always wear heavy leather gloves when handling winch wire rope.
7. Always remove jewelry and wear eye protection.
8. Always be aware of possible hot surfaces at winch motor, drum or wire rope during or after winch use.
9. Inspect equipment regularly, replace damaged or worn parts, and keep appropriate records of maintenance.
10. Use only PROWINCH®'s recommended parts for replacement. Any modifications or repairs without the approval from PROWINCH® will void warranty.

2.1. SAFETY INSTALLATION

1. Choose a mounting location that is sufficiently strong to withstand the maximum pulling capacity of your winch.
2. Use class 8.8 metric (grade 5) or better hardware.
3. Do not weld mounting bolts.
4. Use factory approved mounting hardware, components, and accessories.
5. Do not use bolts that are too long.
6. required bolt length to ensure proper thread engagement.
7. Complete the winch installation and hook attachment before installing the wiring.
8. Always keep hands clear of winch wire rope, hook loop, hook and fairlead opening during installation, operation, and when spooling in or out.
9. Always position fairlead with warning readily visible on top.
10. Prestretch wire rope and respool under load before use. Tightly wound wire rope reduces chances of binding, which can damage the wire rope.
11. Insulate and protect all exposed wiring and electrical terminals.
12. Do not route electrical cables across sharp edges, near parts that get hot and/or through or near moving parts.
13. Always place the supplied terminal boots on wires and terminals as directed by the installation instructions.
14. Do not lean over battery while making connections.
15. Do not route electrical cables over battery terminals.
16. Do not short battery terminals with metal objects.
17. Battery Recommendations A fully charged conventional automotive battery with a minimum rating of 650 cold cranking amps is recommended to obtain peak performance from your winch. Make sure all electrical connections are clean and tight.
18. Consult this User's Manual for proper wiring details.



DANGER:

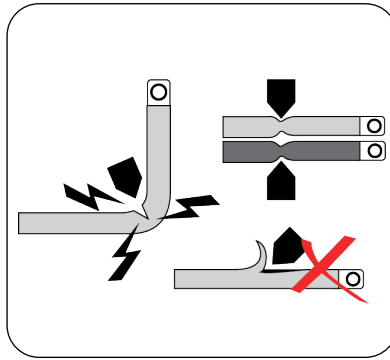
Failure to observe these instructions could lead to serious injury or death.

2.2. SAFETY OPERATION

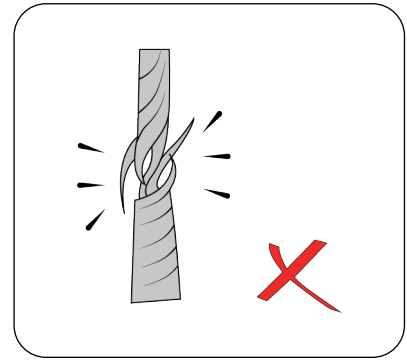
- 1.** Inspect winch wire rope, hook, and slings before operating winch. Frayed, kinked or damaged winch wire rope must be replaced immediately. Damaged components must be replaced before operation. Protect parts from damage.
- 2.** Remove any element or obstacle that may interfere with safe operation of the winch.
- 3.** Always be certain the anchor you select will withstand the load and the strap will not slip.
- 4.** Always use supplied hook strap whenever spooling winch wire rope in or out, during installation and during operation.
- 5.** Always require operators and bystanders to be aware of vehicle and or load.
- 6.** Be aware of stability of vehicle and load during winching, keep others away. Alert all bystanders of an unstable condition.
- 7.** Always unspool as much winch wire rope as possible when rigging. Double line or pick distant anchor point.
- 8.** Take time to use appropriate rigging techniques for a winch pull.
- 9.** Do not touch winch wire rope or hook while someone else is at the control switch or during winching operation.
- 10.** Do not engage or disengage clutch if winch is underload, winch wire rope is in tension or drum is moving.
- 11.** Do not touch winch wire rope or hook while under tension or under load.
- 12.** Stand clear of winch wire rope and load and keep other away while winching.
- 13.** Do not use vehicle to pull load on winch wire rope. Combined load or shock load can damage, overload and break wire rope.
- 14.** Do not wrap winch wire rope back onto itself. Use a choker chain or tree trunk protector on the anchor.
- 15.** Do not operate winch with less than 5 wraps of winch wire rope or 10 wraps of synthetic rope around the drum. Wire rope could come loose from the drum, as the wire rope attachment to the drum is not designed to hold a load.
- 16.** Do not use winch as a hoist or to suspend a load.
- 17.** Always be certain anchor will withstand load, use appropriate rigging and take time to rig correctly.
- 18.** Do not use winch to lift or move persons.
- 19.** Do not use excessive effort to freespool winch wire rope.
- 20.** Always use proper lifting technique or get lifting assistance while handling and installing.
- 21.** Always wind the winch wire rope on bottom (mountside) of drum.
- 22.** Do not wind wire rope over top of drum. Always spool the winch wire rope onto the drum in the direction in this manual.
- 23.** Do not leave remote control where it can be activated during free spooling, rigging, or when the winch is not being used.
- 24.** Do not leave the winch remote control plugged in when installing, freespooling, rigging, servicing or when the winch is not being used.
- 25.** Do not operate any equipment on which the safety placards or decals are missing or illegible.
- 26.** Report any malfunction or irregular operation of the equipment.
- 27.** Do not operate an equipment that has been modified without previous PROWINCH® approval.
- 28.** Winch damper helps to prevent wire rope recoil in the event of a wire rope failure. Do not approach or move the damper once tension is applied. Do not allow it to get pulled into the fairlead.



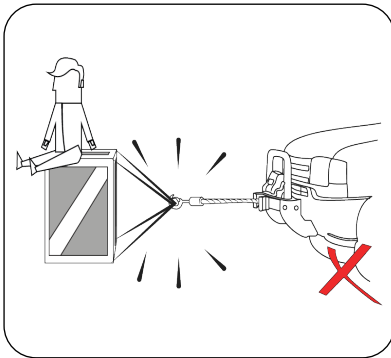
1. Do not exceed winch or winch rope rated capacity.



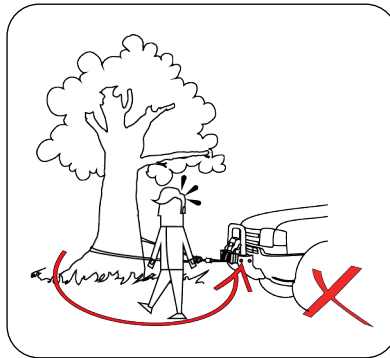
2. Do not route electrical cables across sharp edges, near parts that get hot and/ or through or near moving parts.



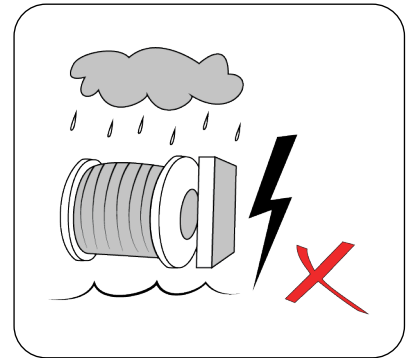
3. Always inspect winch rope, hook, and slings before operating winch. Frayed, kinked or damaged winch rope must be replaced immediately.



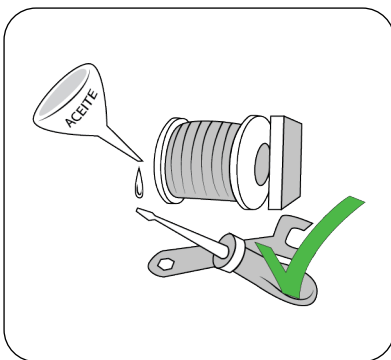
4. Do not use the equipment to lift or move people.



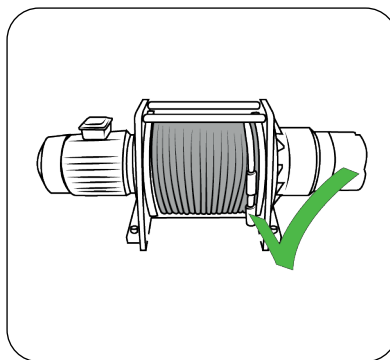
5. During winching operation always be aware of stability of vehicle and load during winching, keep others away. Alert all bystanders of an unstable condition.



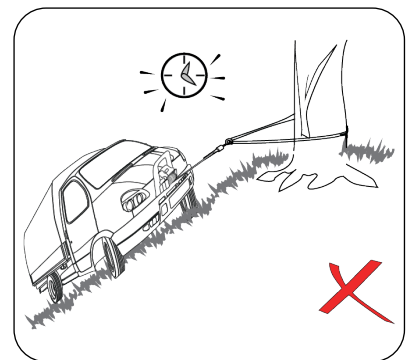
6. Do not submerge winch in water. Always store the remote control in a protected, clean, dry area.



7. Perform preventive checks as part of a regular maintenance schedule to keep your winch operating properly.



8. Always verify installation before operating.



9. Do not leave loads unattended, wire rope could come loose from the drum, as the wire rope attachment to the drum is not designed to hold a load.

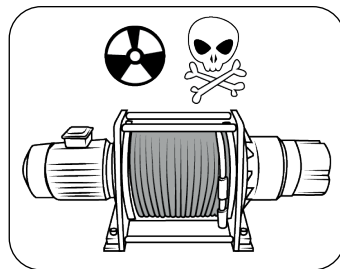
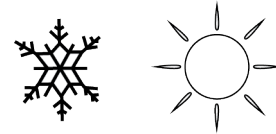
2.3. GENERAL ENVIRONMENTAL PRECAUTIONS



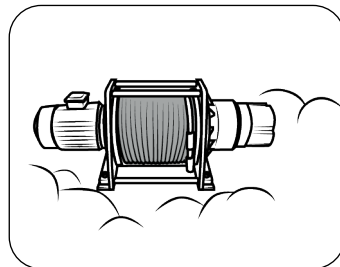
DANGER:

The following environmental conditions can cause malfunction of the winch.

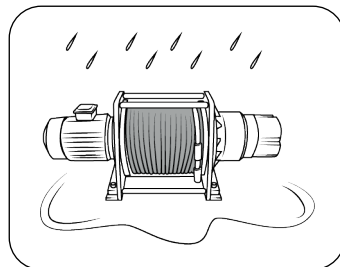
The following environmental conditions may cause malfunctions in the equipment. When operated outdoor, a shelter should be used for extreme weather conditions: below -10°C or above 40°C



If used near chemicals, corrosive gas or explosives may cause an explosion. Exposure to salt or acids may cause malfunctioning.



Exposure to sand may cause malfunctioning.

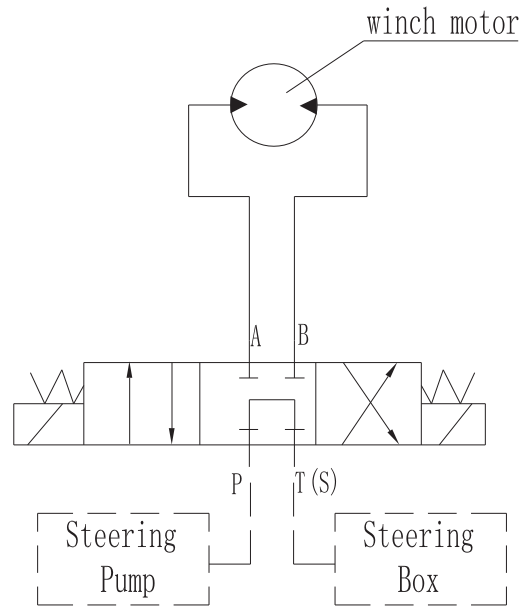


Avoid exposure to rain or extreme humidity. It may cause rusting of the equipment.

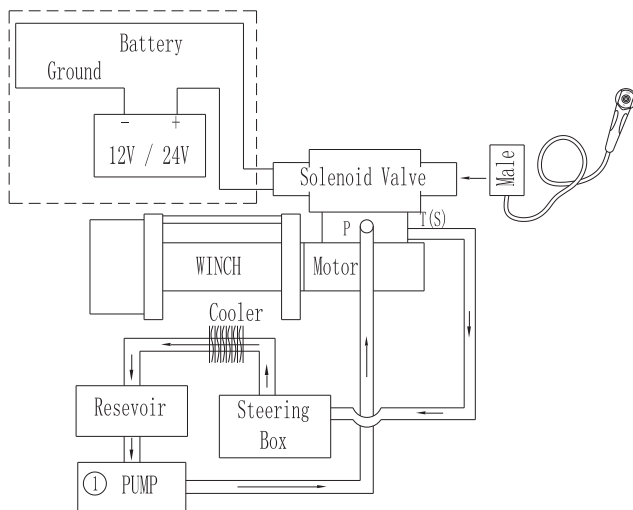
WARNINGS



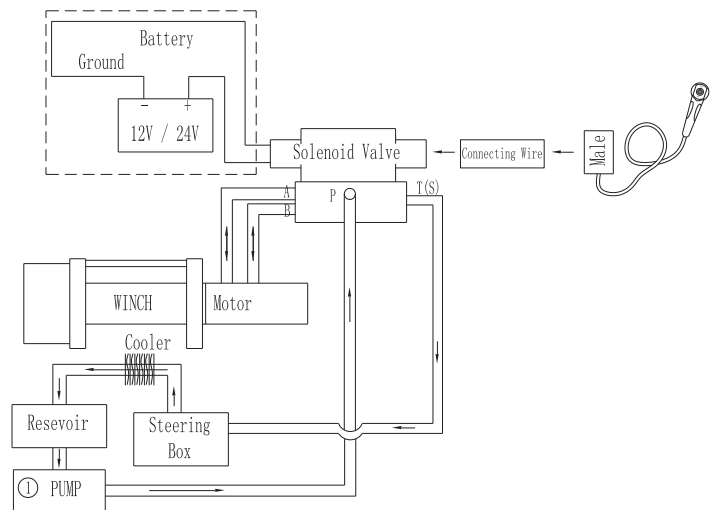
Working hydraulic principle chart and installation illustration (U/A series)



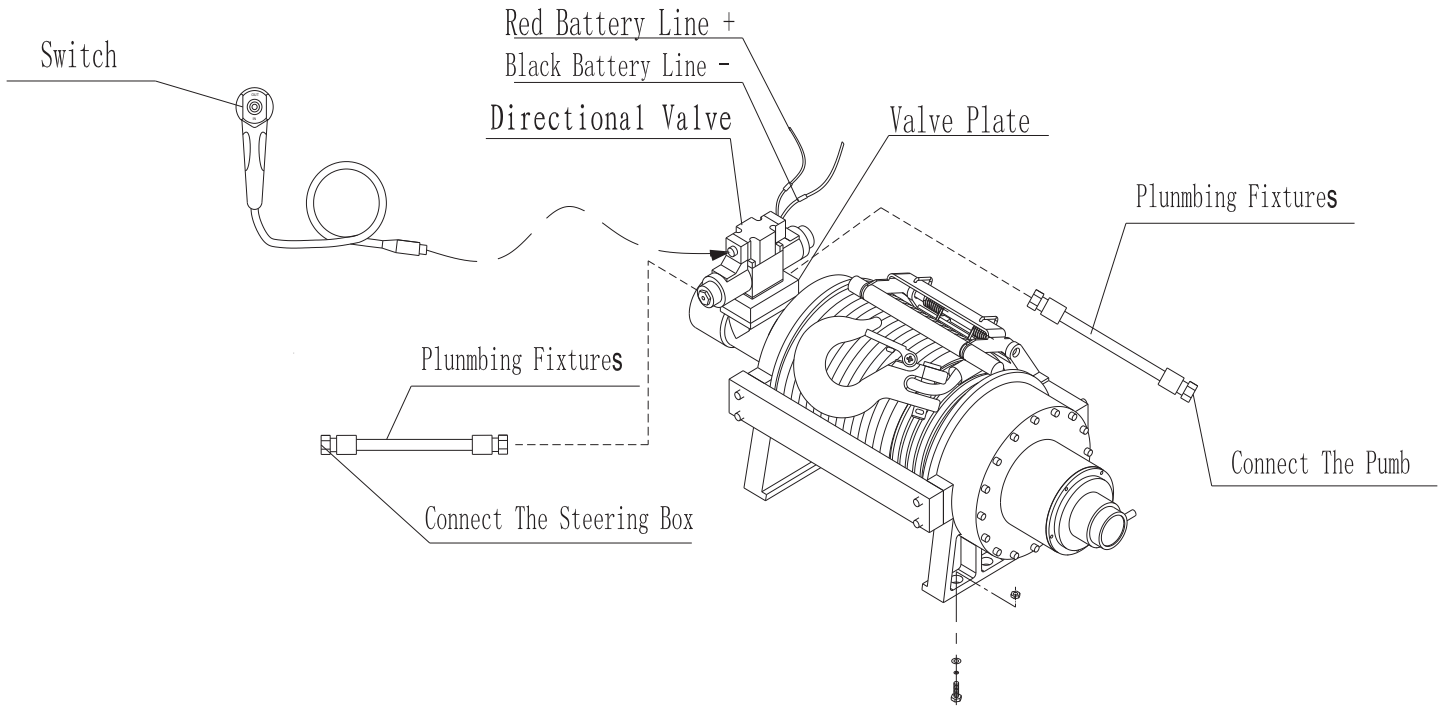
U-Type



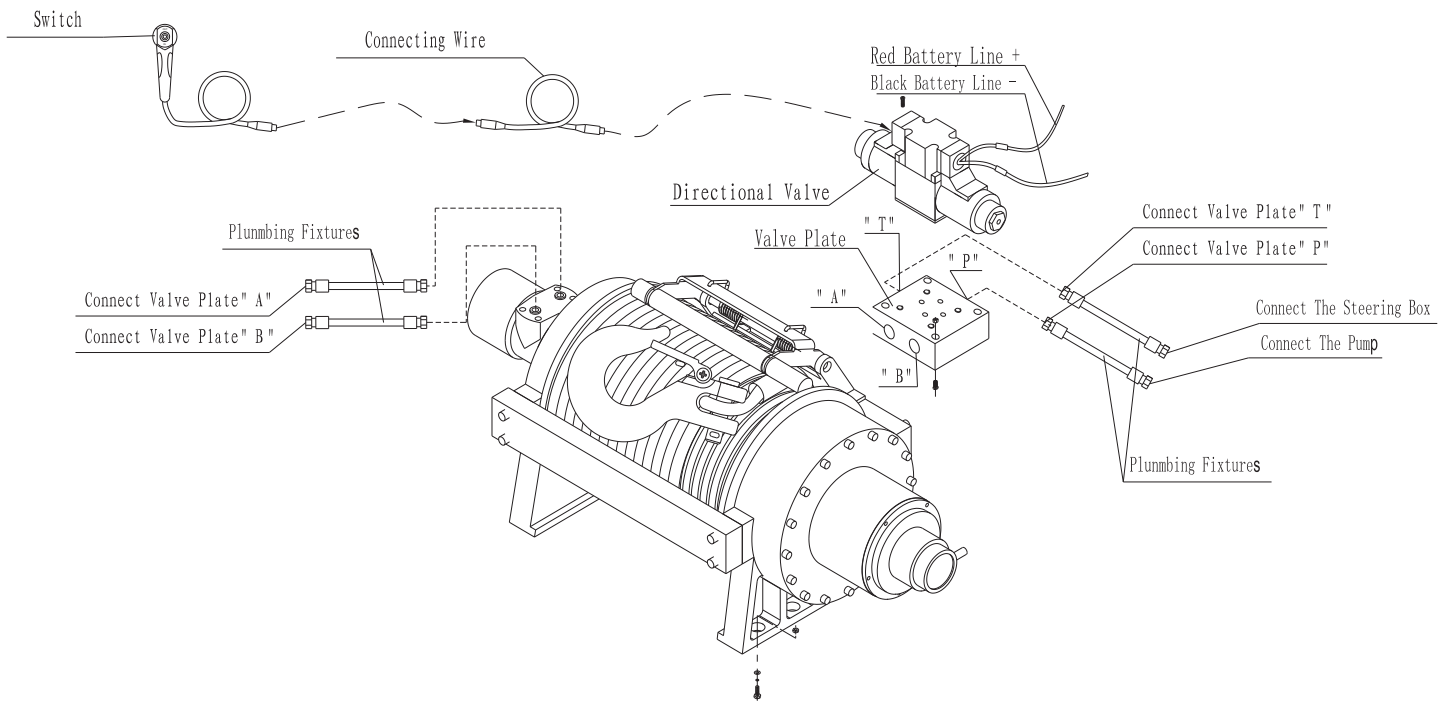
A-Type



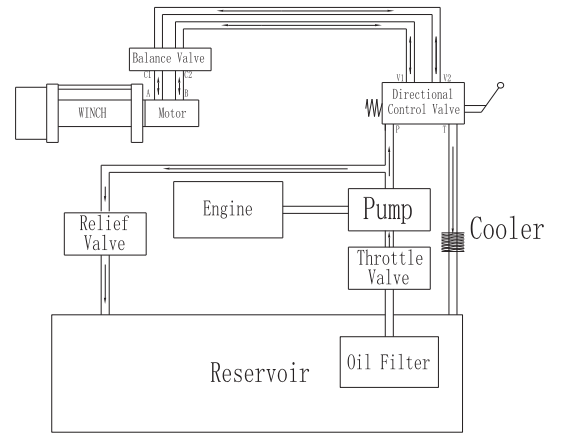
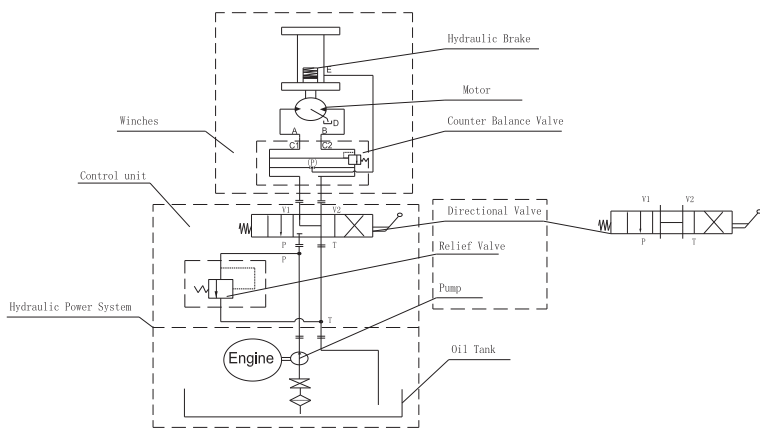
Mounting Drawing U-Type



Mounting Drawing A-Type



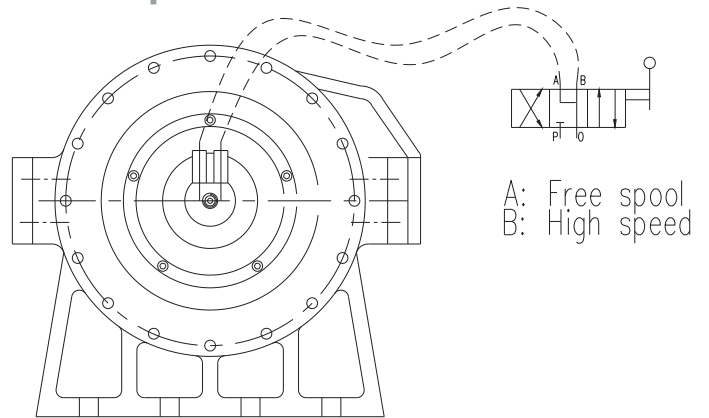
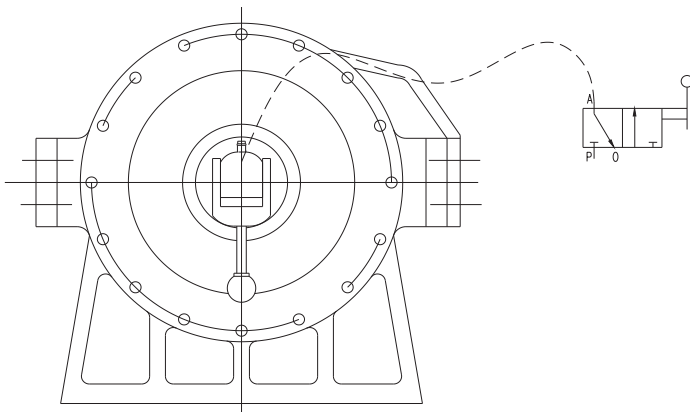
Working hydraulic principle chart and installation illustration:



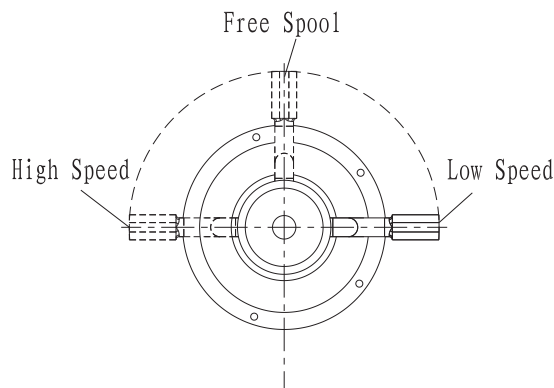
Pneumatic Clutch

• Pneumatic Clutch Free Spool

• Pneumatic Clutch Free Spool double speed



Manual clutch operation two speed



PWY90S With Balance Valve Winch Performance Specification

PWY90S	
Rated line pull	20000 lbs single line
Motor displacement	100 ml/rev
Max. flow	15-75 l/min
Max pressure	17.5 Mpa
Gear Train	2 stage planetary gear
Gear Ratio	High speed: 6:1; Low speed: 39:1
Clutch	Cam Clutch
Braking Action	Automatic Hydraulic Brake
Fairlead	4-way roller fairlead (Optional)
Wire rope	9/16: x 157'
Drum Size	5.4" x 12.4"
Dimensions	32.3" x 14.6" x 12.6"
Bolt pattern	17.0" x 2.5" x 7.6"
Net Weight	360 lbs

Pull , Speed, Pressure, Flow (First layer)

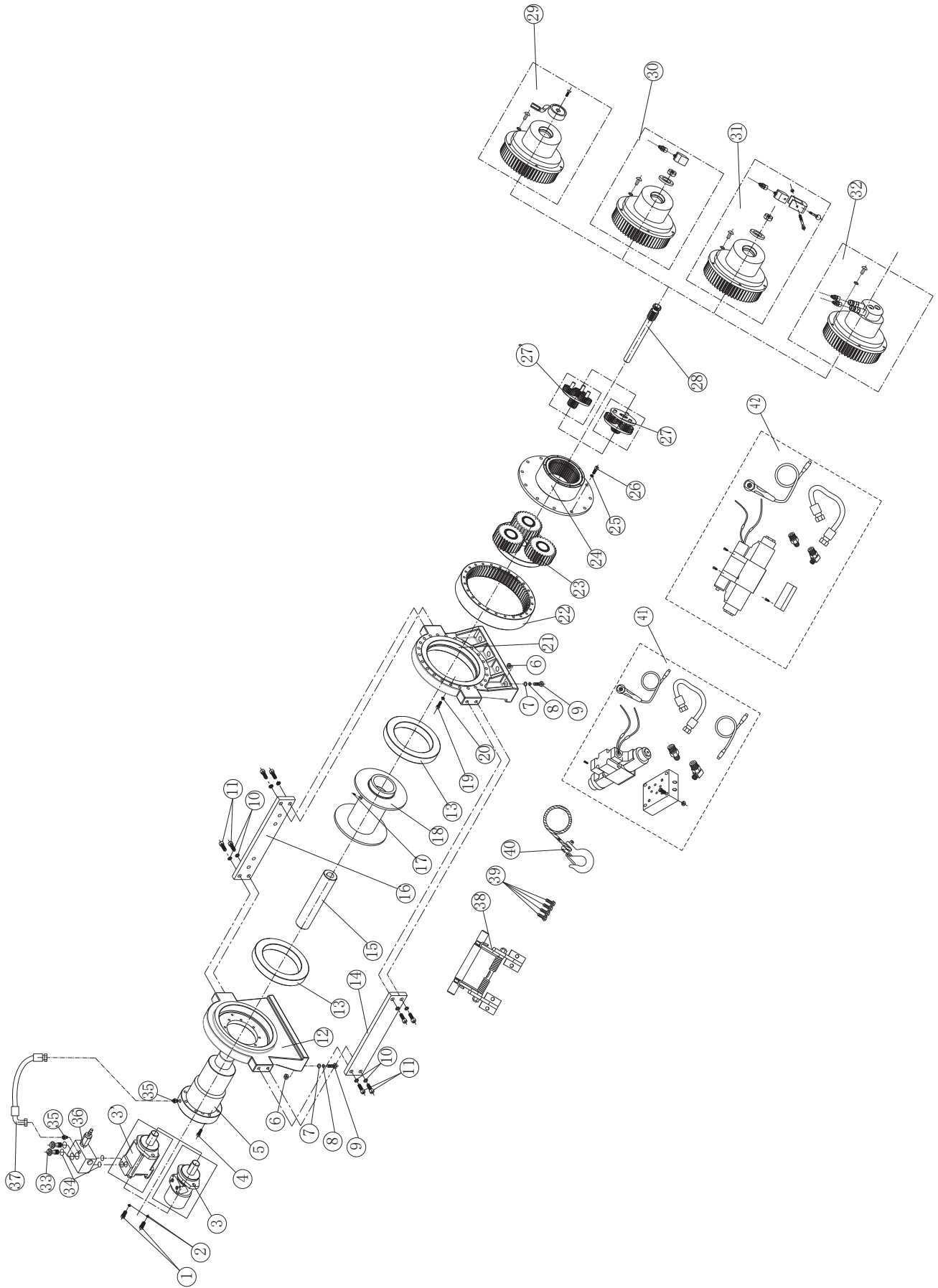
20000lb winch line pull and pressure difference					
Line Pull		Pressure MPA	Flow G/ min	Line Speed ft/min	
Low Speed	High Speed			Low Speed	High Speed
0	0	2.5	4	5.9	27.2
4000	696	4.2	7.9	11.8	30.7
8000	1391	8.5	13.2	19.7	106
15000	2609	14	15.9	23.6	129.3
20000	3478	17.5	19.9	29.5	164

Line pull, cable capacity and the line speed per layer

Layer of Wire Rope	Rated line Pull (lbs)	Total rope on drum	Oil Flow 60 l/min	
			Low Speed	High Speed
1	20000	33.8	23.6	135.8
2	16889	73.8	27.9	160.8
3	14615	117.8	32.2	185.7
4	12881	157.5	36.7	204.1

Parts List

No.	Part Name	Qty.	No.	Part Name	Qty.
1	Screw M12 x 35	2	33	Screw	2
2	Lock Washer M12	2	34	Seal ring	4
3	Hydraulic Motor	1	35	Tube Fittings Assembly	2
4	Screw M8 x 30	8	36	Balanced Valve Assembly	1
5	Brake / Shaft Assembly	1	37	Plumbing Fixtures	1
6	Hex Flange Nut M14	8	38	Tensioned of Steel wire supplied Assembly	1
7	Think Flat Washer M14	8	39	Screw M10 x 25	4
8	Lock Washer M10	8	40	Cable Assembly	1
9	Cap Screw M14 x 50	8	41	Control Section	1
10	Lock Washer M10	4	42	Control Section	1
11	Screw M10 x 30	4			
12	Front Bearing	1			
13	Roller bearing	2			
14	Frontal Mounting Plate	1			
15	Coupling	1			
16	Back mounting Plate	1			
17	Screw M8 x 10	1			
18	Drum Assembly	1			
19	Screw M8 x 35	24			
20	Lock Washer M8	24			
21	End bearing	1			
22	Gear Ring	1			
23	Gear Carrier Assembly (Output)	1			
24	Cam gear (Input)	1			
25	Lock Washer M8	12			
26	Screw M8 x 20	12			
27	Gear Carrie Assembly	1			
28	Transmission Shaft	1			
29	Clutch Assembly	1			
30	Clutch Assembly	1			
31	Clutch Assembly	1			
32	Clutch Assembly	1			





Prowinch LLC

www.prowinch.com

2545 NW 74th Ave Miami, Florida, 33122

United States

+1 (800) 971-8061

Equipos de Izaje Prowinch Chile Spa

www.prowinch.cl

Parque Riesco 3407, Recoleta,

Región Metropolitana, Chile

+56-2-26218989

Fortis Alloy Mexico S.A. de C.V

www.prowinch.mx

Fortis Alloy Mexico, S.A. de C.V. Vicente Guerrero No. 403

Col. San Miguel, Apodaca, Nuevo Leon,

Mexico C.P. 66649

+52 (81) 8244-1351

Prowinch Colombia SAS

www.prowinch.co

Cl. 163a #20-28, Bogotá, Colombia

+57 1 7034035

Provedora Industrial y Tecnica, S.A. de C.V.

www.prointe.com.sv

Av. Alberto Masferrer Sur, Col. Campestre No. 211

San Salvador, El Salvador

2264-1100

Representaciones Ivankovich RA S.A.

ivankovich.co.cr

100 mt. Este y 300 Mt. Sur de las Oficinas Centrales del

INS, Cartago, Costa Rica

(506) 2553-1415